

# SCSI Card Installation Update

**EPSON Expression 800 Color Scanner**

**EPSON Expression 836XL Color Scanner**

The EPSON® Expression® 800 and 836XL color scanners now include a new type of SCSI card that offers better speed and compatibility with both Windows® 95, Windows 98, Windows NT® 4.0 and Macintosh® G3 computers. The new card is the Adaptec™ model AVA-2903B.

If your computer does not already have a SCSI port, this Update will guide you through installing the new hardware and driver software for Windows and Macintosh systems.



The installation information in this Update *replaces* some of the instructions in your scanner's setup guide. Therefore, you must follow these installation instructions *before* following any other installation steps.

---

## Who Needs This Update?

If you do not have a SCSI connector in your Windows or Macintosh computer, you need to follow the SCSI installation instructions in this Update.

### ***If you have a Windows 95/98/NT 4.0 Computer:***

If your Windows PC already has a SCSI port, you can disregard this Update. If your Windows PC does not have a SCSI port, follow the instructions in these sections:

- Installing the SCSI Interface Board
- Installing the SCSI Driver Software in Windows

## ***If you have a Macintosh G3 Computer:***

If your Macintosh already has a SCSI port, you can disregard this Update. If your Macintosh does not have a SCSI port, follow the instructions in these sections:

- Installing the SCSI Interface Board
- Installing the SCSI Driver Software for the Macintosh
- Installing the Macintosh TWAIN Software

---

## **Installing the SCSI Interface Board**

You must install your SCSI board before installing the scanner driver and software applications. If you have a Macintosh with a SCSI interface, or if you already have a SCSI board installed in your PC, skip this section.

This section replaces information found on pages 10–11 in the *Expression 836XL Setup Guide*, and on page 12 of the *Expression 800 Setting Up and Using Your Scanner* guide.



For additional installation information, see your computer documentation.

1. Turn off the computer and any peripheral devices. Unplug any power cords; then disconnect all cables from the back panel of your computer.
2. Remove the cover from your PC, or open up your Macintosh G3.

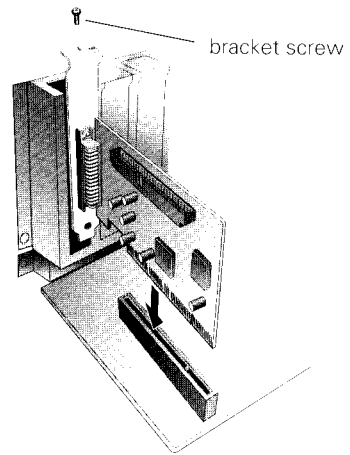


Static electricity can damage electronic components. Ground yourself before you touch any of the computer's internal components by touching an unpainted metal surface inside the computer case.

3. Remove the slot cover from an empty PCI expansion slot in your computer. (See your computer documentation for information about your PCI slots.)

4. Insert the interface board into the slot; then secure it with the bracket screw.
5. Replace the computer cover and reconnect all cables.

If you have a Windows-based PC, continue with the following section, “Installing the SCSI Driver Software in Windows.” If you have a Macintosh G3, continue with the section “Installing the SCSI Driver Software for the Macintosh” on page 6.



---

## Installing the SCSI Driver Software in Windows

Once the SCSI interface card is installed in your computer, Windows must locate and install the SCSI card's software drivers. The scanner and the scanning software will not work if the SCSI card's software drivers are not installed immediately after installing the card.

This section replaces information found on pages 14–15 in the *Expression 836XL Setup Guide*, and on pages 15–20 of the *Expression 800 Setting Up and Using Your Scanner* guide.

Windows 95/98 and Windows NT 4.0 each have a different driver installation procedure, so follow the instructions below for your operating system.

### ***If you're running Windows 95 or Windows 98 . . .***

Depending on how your computer system was originally set up, you may be asked to insert your Windows operating system CD-ROM during the SCSI software installation process. Please have your Windows CD-ROM handy, in case it is needed.

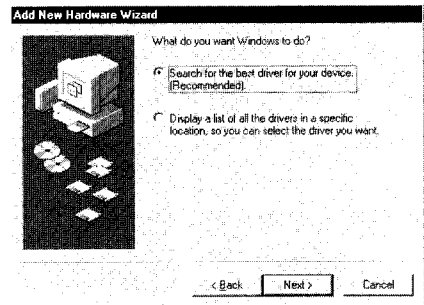
Once the SCSI card and its software are installed on your computer, you can set up and connect your scanner and install your scanning software, following the instructions in your setup guide.

1. Turn on your computer. During the Windows start-up sequence, a screen appears saying that your system has detected new hardware.

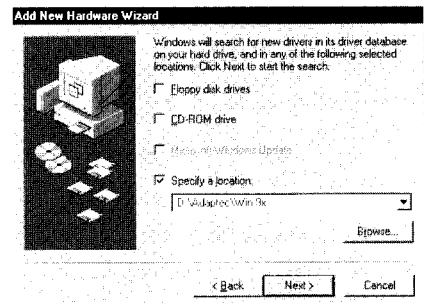


If your system doesn't automatically detect the SCSI board, run EZ-SCSI, a special Windows SCSI configuration utility. To do this, insert your SCSI Driver CD-ROM into your drive. Click Start, then click Run. Type `D:\Adaptec\EZSCSI\Setup` in the textbox (where *D:* is your CD-ROM drive), then click OK.

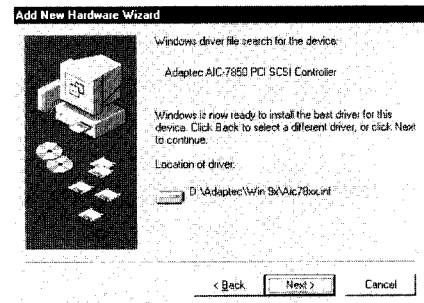
2. Click Next. You see the screen to the right.
3. Make sure Search for the best driver for your device is selected. Insert the SCSI Driver CD-ROM in your drive, then click Next.



4. When you see the screen to the right prompting you for the location of the driver, uncheck the Floppy disk drives and CD-ROM drive options and check Specify a location. Then use the Browse button to specify the location of `D:\Adaptec\Win 9x` (where *D:* is your CD-ROM drive).



5. When you see a screen indicating that Windows is ready to install the best driver for this device, click Next to begin driver installation.
6. If your system stops and requests files from your Windows operating system CD-ROM, replace the EPSON SCSI Driver disk with your Windows disk and click OK to continue. You may be prompted to re-insert the EPSON SCSI driver disk after the Windows disk.

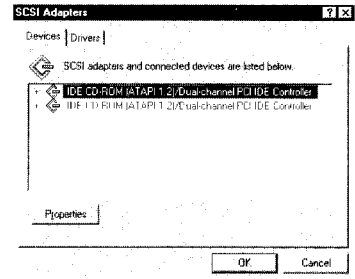


7. When you see a screen indicating that installation is complete, click Finish. The Add New Hardware Wizard closes, and you return to the Windows desktop.

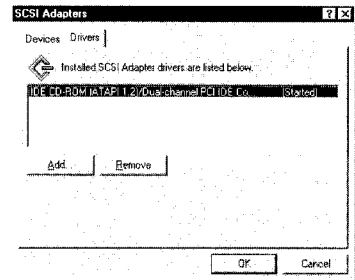
## ***If you're running Windows NT 4.0 . . .***

Depending on how your computer system was originally set up, you may be asked to insert your Windows NT CD-ROM during the SCSI software installation process. Please have your CD-ROM handy, in case it is needed.

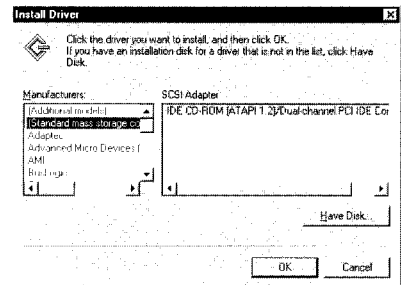
1. Turn on your computer, and log into Windows NT.
2. Wait until you see the Windows desktop icons, then click Start > Settings > Control Panel.
3. Double-click SCSI Adapters. You see the dialog box on the right.



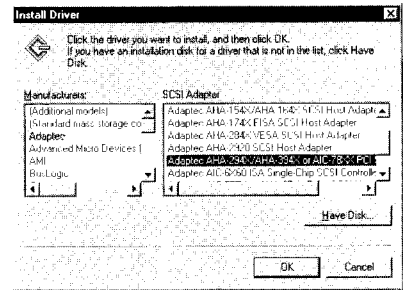
4. Click the Drivers tab.



5. Click the Add button. After a moment, you see the Install Driver dialog box.



6. In the Manufacturers list, click Adaptec.
7. In the SCSI Adapter list, click Adaptec AHA-294X/AHA-394X or AIC-78XX PCI SCSI Controller.
8. Click OK. If you see a prompt to install the Windows NT CD-ROM, insert it and click OK.
9. The necessary driver files are copied to your hard drive, then you see a prompt to restart your system.
10. Click Yes. Be sure to close any open windows and restart.



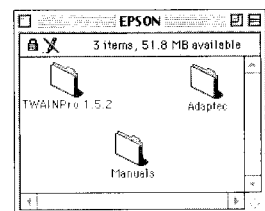
Once the SCSI card and its software are installed on your computer, you can set up and connect your scanner and install your scanning software, following the instructions in your setup guide.

## Installing the SCSI Driver Software for the Macintosh

Once the SCSI interface card is installed in your computer, you must install the SCSI card's software drivers. Your scanner and scanning software will not work if the SCSI card's software drivers are not installed immediately after installing the card.

Installing the SCSI driver software is easy—just follow the steps listed below:

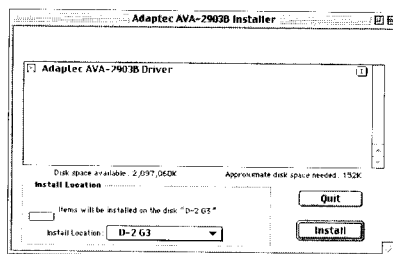
1. Turn on your computer. Disable any anti-virus programs.
2. Insert the EPSON SCSI Driver CD-ROM in your drive.
3. If the EPSON window does not automatically open, double-click the EPSON CD-ROM icon on your desktop.
4. Double-click the Adaptec folder in the EPSON Window.



5. Double-click the Adaptec AVA-2903B Installer icon.



6. When the Adaptec Installer window appears, select the hard drive where you want to install the driver (your startup hard drive is selected by default) and click Install.



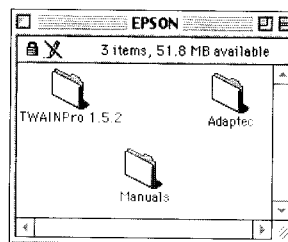
7. If the installer prompts you to restart your computer, click Restart or Continue to let it perform the restart.

## Installing the Macintosh TWAIN Software

Once the SCSI interface card and driver software are installed, you must install the new scanner software (referred to as TWAIN drivers). Your scanner and scanning software will not work unless you install the new TWAIN drivers after you install the SCSI card.

To install the TWAIN software, follow these steps:

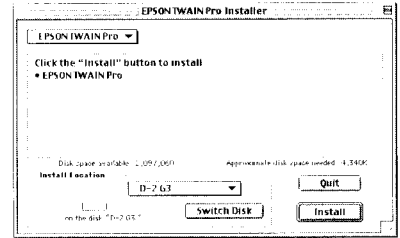
1. Disable any anti-virus software.
2. With the EPSON SCSI Driver CD-ROM still in your drive, double-click the EPSON CD-ROM icon to open it.
3. Double-click the TWAINPro 1.5.2 folder in the EPSON Window.



4. Double-click the EPSON TWAIN Pro Installer icon.



5. When the EPSON TWAIN Installer window appears, select the hard drive where you want to install the driver (your startup hard drive is selected by default) and click Install.



6. When the installation program prompts you, click Quit to finish the installation.
- Once the SCSI card, SCSI driver, and TWAIN software are installed on your Macintosh, you can set up and connect your scanner and install additional software, following the instructions in your setup guide.

EPSON is a registered trademark of SEIKO EPSON CORPORATION.

Copyright © 1999 by Epson America, Inc.

CPD 8917  
6/99